



# MARINE CONSTRUCTION EXPERT



certified by



# Table of Content

## Introduction

ISO Certificate	01
Message From The Board	05
Milestone	07
About ASM	11

## Service & Experience

Core Services	15
Dredging	17
Project & Fleet Management	17
Survey	18
Construction & Installation	18
Material Supply	18
Service Highlight	21
On Going Project	22
Project Highlight	23
Project Finished 2025	25

## Equipment

Bianca	32
Grab Dredger	34
Cakra 68	36
Megimaru	38
Yashima Maru	39

## Other

Safety	40
Training	42
Latest News	43
Our Gallery	44
Contact	50





# WE ARE A MARINE CONSTRUCTION **EXPERT**

PT Anugerah Samudera Madanindo is all in marine construction expert. Together with our people and world-class experience, we are continuously to be one stop solution for marine construction and create the future.





“ **Continue  
to Built With  
Responsibility** ”



## MESSAGE FROM THE BOARD

At PT Anugerah Samudera Madanindo (ASM), our ultimate goal is to become an international company built on the values of professionalism, empathy, and mutually beneficial principles in conducting business, while continuously enhancing all our resources. This vision drives every aspect of our operations and forms the foundation of our corporate culture. To realize this, we have embedded three core values at the heart of our company: Quality, Safety, and Manpower Development. These values are not just guiding principles they are the pillars upon which we have built our legacy. We have built history through our achievement, and we continue to build that history with a deep sense of responsibility toward our people, partners, and the environment.

At ASM, quality and safety are at the core of everything we do. Our team upholds safety principles and life-saving rules with pride and dedication, turning them into everyday practice. We lead by example and strive to inspire others to embrace these values not just for compliance, but as a culture of care. This commitment strengthens trust with our clients and stakeholders, enabling us to consistently deliver outstanding results. Equally, we place great emphasis on manpower development. Everyone at ASM is empowered and expected to work safely, proactively, and with purpose. We invest in people not just to build capabilities, but to shape a future defined by excellence, integrity, and shared success.



# MILESTONE

ASM has achieved milestones throughout its journey, showcasing our dedication. From our initial projects to completing large scale national endeavours, each step reflects our growth and commitment to delivering top-tier services. Our milestones highlight significant achievements in dredging and reclamation, project and fleet management, survey work, construction material supply, and construction and installation. These accomplishments underscore our capability to meet challenges head-on and leave a lasting impact on the industry.

## 2021

### October

ISO Certificates Awarded (9001, 14001, 45001)

## 2022

### May

Awarded for SMK3  
Implementation by the  
Ministry of Manpower  
(Kemnaker RI)

## 2022

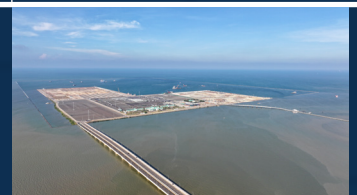
### Oktober

Approve Vendor of SKK Migas

## 2022

### November

Be a part of  
National Strategic Project  
Patimban Port Development  
Phase II



## 2021

### March

First project contract  
from Wakachiku  
Construction co.,ltd

## 2021

### January

Established

● **2023**  
**May**  
Involved in  
Major Petrochemical Project  
LINE Project, Cillegon



● **2024**  
**May**  
Upper structure project at  
Patimban Port Development  
started

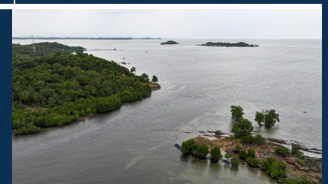


● **2024**  
**December**  
First Overseas Project  
Reclamation on Sihanoukville Port  
New Container Terminal Development

● **2025**  
**January**  
First Reclamation Project  
Terminal Salat Baru Teluk  
Betung Development

● **2025**  
**March**  
Entering Mining Sector  
Muara Satui Dredging  
Works

● **2026**  
**January**  
Involved in  
First Oil & Gas Sector Project  
Gas Pipeline Facility  
Development Project From  
West Natuna Transport System  
(WNNTS) to Pemping Island





# MARINE CONSTRUCTION EXPERT

**5**  
Years

**30**  
Expertise

**18**  
Clients

**300**  
Marine Workers

**20+**  
Managed Fleet



**40**

**Project**

**4.256.781**

**Safe Man-Hour**

---

# Company Overview



PT Anugerah Samudera Madanindo (PT ASM) is an Indonesian marine construction company built on a foundation of experience, trust, and partnership. Headquartered in Semarang, Central Java, we offer integrated solutions across a wide range of marine and inframarine activities from dredging and reclamation to underwater pipeline works and structural inspection.

What sets PT ASM apart is not only our operational capabilities, but also our approach. We understand that in this industry, reliability, communication, and transparency are just as important as technical performance. With a fleet of reliable vessels, advanced survey equipment, and a team trained in international project standards, we are committed to supporting your operations with precision and care, whether as a local partner or a strategic project ally in Indonesia.

We believe that strong collaboration begins with shared values. Our goal is not simply to deliver services, but to become a dependable part of your project journey offering local insight, timely execution, and a mindset shaped by global marine experience.

---

Established in January

**2021**

with early recognition through a national-scale project award

---

With A Team  
Of Experienced Professionals,  
We Are Fully Dedicated  
In Partnering  
With Your Company  
**To Make History.**



• • •

## TO BECOME AN INTERNATIONAL COMPANY

With Value Of Professionalism, Empathy,  
And Mutually Beneficial Basic Principles  
In Performing Business And To Enhance All  
Its Resources.





# CORE



**DREDGING  
& RECLAMATION**

**01**

---

**PROJECT & FLEET  
MANAGEMENT**

**02**

---

**MARINE SURVEY  
WORK**

**03**

---

# OUR

ASM provides five essential services aimed at addressing a variety of challenges and establishing a tradition of excellence. Our area of specialization encompass dredging and reclamation , project and fleet management, precise survey work, the supply of top-quality construction materials, and innovative construction and installation solutions. By combining these services, we guarantee efficiency and depend ability for all our project.

# SERVICES

04

---

**MATERIAL SUPPLY**

05

---

**CONSTRUCTION  
& INSTALLATION**

# WE KNOW WHAT TO DO

---

## DREDGING & RECLAMATION



Transforming coastlines and waterways is our specialty. With a wealth of experience in dredging and reclamation projects, we offer unparalleled expertise to revitalize your waterfront. From enhancing navigability to reclaiming land for development, we tailor solutions to meet your specific needs. Trust us to bring your vision to life with precision and efficiency.

---

## PROJECT & FLEET MANAGEMENT



Experience meets excellence in our project management services, where seasoned expertise ensures smooth execution from start to finish, our seasoned team ensures seamless coordination and timely delivery. Trust in our proven track record to navigate complexities, mitigate risks, and optimize resources for unparalleled project success.

## SURVEY WORK



Unlock the full potential of your project with our comprehensive surveying capabilities, encompassing bathymetric, topographic, soil investigation, sub-bottom profiling, positioning, and more, all backed by our unwavering dedication to excellence. With a proven track record in diverse environments, our experienced team ensures accurate data collection and analysis.

## CONSTRUCTION & INSTALLATION



We have the capability to deliver end-to-end Construction and Installation services covering site preparation, structural works, and the integration of mechanical, electrical, and civil components with a strong focus on safety, quality, and efficiency. Our capabilities also include underwater inspection, salvage, pipe and armour installation, and the construction of marine structures such as jetties, breakwaters, and sea water intake systems.

## MATERIAL SUPPLY



From boulders to sand, stones to split works, trust us as your reliable source for high-quality materials to meet your project needs. With a commitment to quality and reliability, we ensure timely delivery of the exact materials you need, when you need them. Trust our expertise and efficiency to streamline your supply chain and keep your project on track.



**We are fully prepared to embrace your challenges, and committed to realizing your project with unwavering dedication. We are dedicated to the continuous development of our human resources, striving to foster a supportive work environment. Additionally, we actively ensure safe working conditions.**



## Service highlight

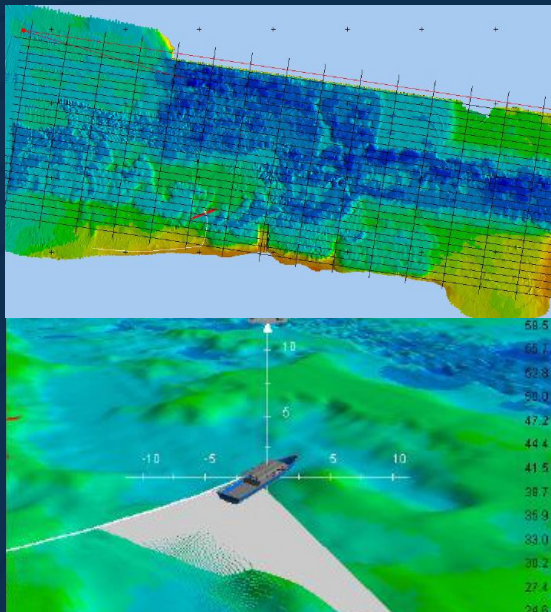
At PT ASM, we understand that every marine construction project comes with unique challenges. With years of experience in the field, our goal is simple : to support your project with the right people, the right tools, and the right solutions at every stage. From planning to execution, we work alongside you to ensure that each step runs smoothly and efficiently.

Our strength lies in our well-equipped and reliable work vessels, complemented by advanced marine survey systems and a

committed team. These resources allow us to handle a wide range of marine construction needs safely, effectively, and with attention to detail.

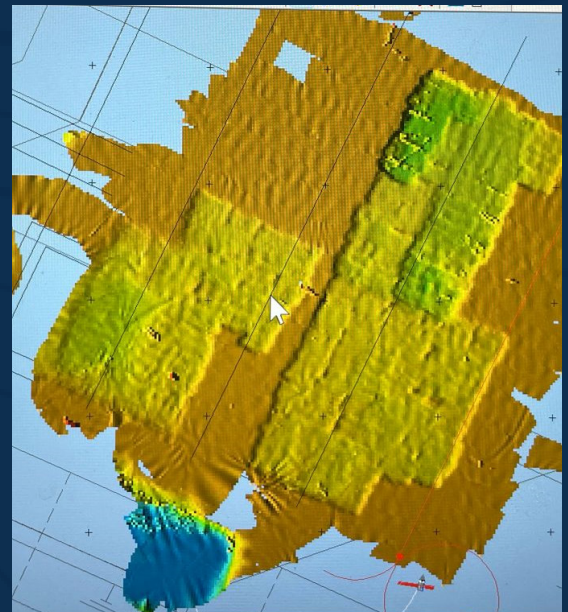
We strive for more than just results we aim for quality, transparency, and trust. We help you uncover what lies beneath the surface, giving you clarity and confidence to move forward. With PT ASM, you're not just building offshore; you're building with insight, care, and a reliable partner.

# More Than Just Results: Clarity, Trust, and Insight Beneath Every Surface.



### Post-dredging Survey Marjan Project

Post dredging bathymetric survey using multi beam echosounder.  
Located at Batu Ampar, Batam



### Bathymetric & Topographic Survey Service

Bathymetric and topographic survey at Patimban Port using single beam echosounder and total station.



# ON GOING PROJECT



## Patimban Port Development Project Phase II

Patimban, West Java

Toa Corporation, PT Waskita Karya (Persero) Tbk, Wakachiku Construction, Hutama Karya, PT Brantas Abipraya (TWWHA JO)



## Dredging Service Muara Satui Area

Satui, South Kalimantan

PT Arutmin Indonesia



## Gas Pipeline Facility Development Project from West Natuna Transportation System (WNTS) to Pemping Island

Pemping Island, Riau Archipelago

PT Timas Suplindo



## Dredging & Land Fill Terminal Salat Baru Teluk Betung Development Project

Teluk Betung, Central Kalimantan

PT Asmin Bara Bronang



## Expansion Pohnpei Port Project, Micronesia

Micronesia

Ieshima Construction Co., Ltd.



## Marine Pipeline Installation – PTFI LNGPP Project

Mimika, Central Papua

PT Hafar Daya Konstruksi

# Patimban Port Development Project



## Project Highlight

### Overview

The objective of the project is to solve the over capacity of existing port to handle increased cargo demands and excessive traffic congestion within the Metropolitan Area by constructing commercial port and access road in Subang Area.





## Scope of Work

- Bathymetric and topographic survey at Patimban Port using single beam echosounder and total station.
- Rakuna Removal & Reinstall Works
- Dredging and Disposal Work for Patimban Port Development Project (Package 5) using grab dredger
- Supply, Fabrication and Installation of Bamboo Mattress for Seawall Works
- Supply, Fabrication and Installation of Bamboo Piling for Seawall Works
- Silt Protection for Dredging Works
- Charter Of Crane Barge 120T
- Stone Works
- Strut Member Installation
- Passenger Boat Provision & Mobilization
- Coping Beam Installation
- TBF-2 Removal Works
- Pre-Hydrographic Survey
- Construction of Temporary Passenger Jetty
- Supply of Anchor Handling Tug Boat as General Assistance to CPM Work
- Breakwater, Seawall, And Channel Dredging Works
- Scouring protection Works
- Vessel charter TB dragon and Flat Top barge Surya Kencana
- Stone dike class 3 behind berth

## Main Vessel

CAKRA 68	Grab Dredger
BIANCA	Grab Dredger
DRACO	Crane Barge
KHARISMA PAWAN	Crane Barge
DEWI ARIMBI	Grab Dredger
KALIMANTAN II	TSHD

## Client



## **Dredging Phase 2 RDMP RU V Project**

Marine Early Works & Dredging by Grab Dredger

Client: PT Rekayasa Industri

Marine early works to support the capital dredging of turning basin RDMP RU V Terminal using railing Suction Hopper Dredger (TSHD). Scope of works including silt curtain installation & removal, navigation buoy relocation dan reinstallation, marine buoy light installation and dredging using grab dredger.



Project Completed  
in 2025

## **Dumai Port Maintenance Dredging**

Dredging and Onshore Dumping Works by Grab Dredger

Client: PT Pengerukan Indonesia (RUKINDO)

Maintenance dredging of the Dumai Port Basin was carried out using a grab dredger supported by a flat-top barge. The dredged material was then transferred to an onshore disposal area using an excavator and dump trucks.



## **Bunati Port Dredging and Disposal**

Dredging and Dumping Works Using Grab Dredger

Client: PT Borneo Indobara (BIB)

Maintenance dredging of Bunati Port was carried out using a grab dredger supported by a split-hopper barge. The dredged material was subsequently transported and disposed of at the designated disposal area.



Project Completed  
in 2025

## **Sihanoukville Port New Container Terminal Development Project**

Land reclamation works using sand pump barge

Client: JuturnaPte. Ltd.

Land reclamation works for the New Container Terminal Development Project at Sihanoukville Port, carried out using a sand pump barge, located in Sihanoukville City, Cambodia.



# REMARKABLE JOURNEY



## Dredging Work at Dumai Port Basin

Dumai, Riau

Dredging and Disposal Work



## Gas Pipeline Facility Development Project from West Natuna Transportation System (WNTS) to Pemping Island

Pemping Island, Riau Archipelago

Provision of Trenching, Beachspool and Backfilling Services



## Reclamation on Sihanoukville Port New Container Terminal Development

Sihanoukville, Cambodia

Sand Replacement Work



## Bathymetric survey at McDermott Facility

Batam

Survey project awarded by McDermott Indonesia



## Trestle Rectification Project Seaport Facility

Palembang

Assesment for Trestle Dismantling and Debris Removal Work



## LINE Project (Package 5 & 7) Development

Cilegon

Soil Investigation Work  
Dredging and Disposal Work



## Patimban Port Development Project Package 2

Patimban

Package 2  
Breakwater Rectification Work.



## Patimban Port Development Project Package 5

Marine Construction Work,  
Dredging and Disposal Work,  
Topographic and Bathymetric Survey Work.



## Patimban Port Development Project Package 6

Soil Investigation Work,  
Passenger Jetty Construction Work,  
Topographic and Bathymetric Survey Work



## 2x1000 MW Coal Fired Power Plant Project

Batang

Dredging Work for Material Barge Access  
Pipeline Backfilling  
Silt Removal (TSHD and Sand Pump)  
Sand Supply & Stone Supply  
Shore Protection Work  
Topographic and Bathymetric Work



## 2x1000 MW Coal Fired Power Plant Project

Maintenance Dredging for Loading-Unloading Jetty  
Silt Curtain Installation  
Topographic & Bathymetric Survey Work



## Tambak Lorok Combined Cycle Power Plant (CCPP) Block 3 Project

Semarang

Caping Beam Installation





**Tanjung Jati B Power Plant Expansion Project**

**Jejara**

Sand and Stone Supply



**PLTU Tanjung Jati B JejaraWorks PLTU Tanjung Jati B Jejara Project**

**Jejara, Central Java**

Seawater Intake Pipe Replacement Works



**Terminal Salat Baru Development Project**

**Teluk Betung, Central Kalimantan**

Dredging and Land Fill Work



**Dredging Phase 2 RDMP RU V Project**

**Balikpapan, East Kalimantan**

Silt Curtain Installation, Relocation Navigation Buoy, Support TSHD Dredging Works



**Dredging Work Bunati Port**

**Bunati, South Kalimantan**

Dredging and disposal Work, Survey Service Work



**Dredging Work at Muara Satui Area**

**Satui, South Kalimantan**

Dredging and disposal Work



**LNG Tangguh Expansion Project**

**Teluk Bintuni**

Maintenance Dredging for Access Channel



**Expansion Pohnpei Port Project, Micronesia**

**Micronesia**

Site management and Supervision Phonpei Port,



An aerial photograph of a rocky breakwater or pier extending into clear, turquoise water. The water is a vibrant greenish-blue, and the rocks are dark and jagged. The breakwater runs horizontally across the middle of the frame, with white foam from waves crashing against it. The overall scene is bright and clear, suggesting a sunny day.

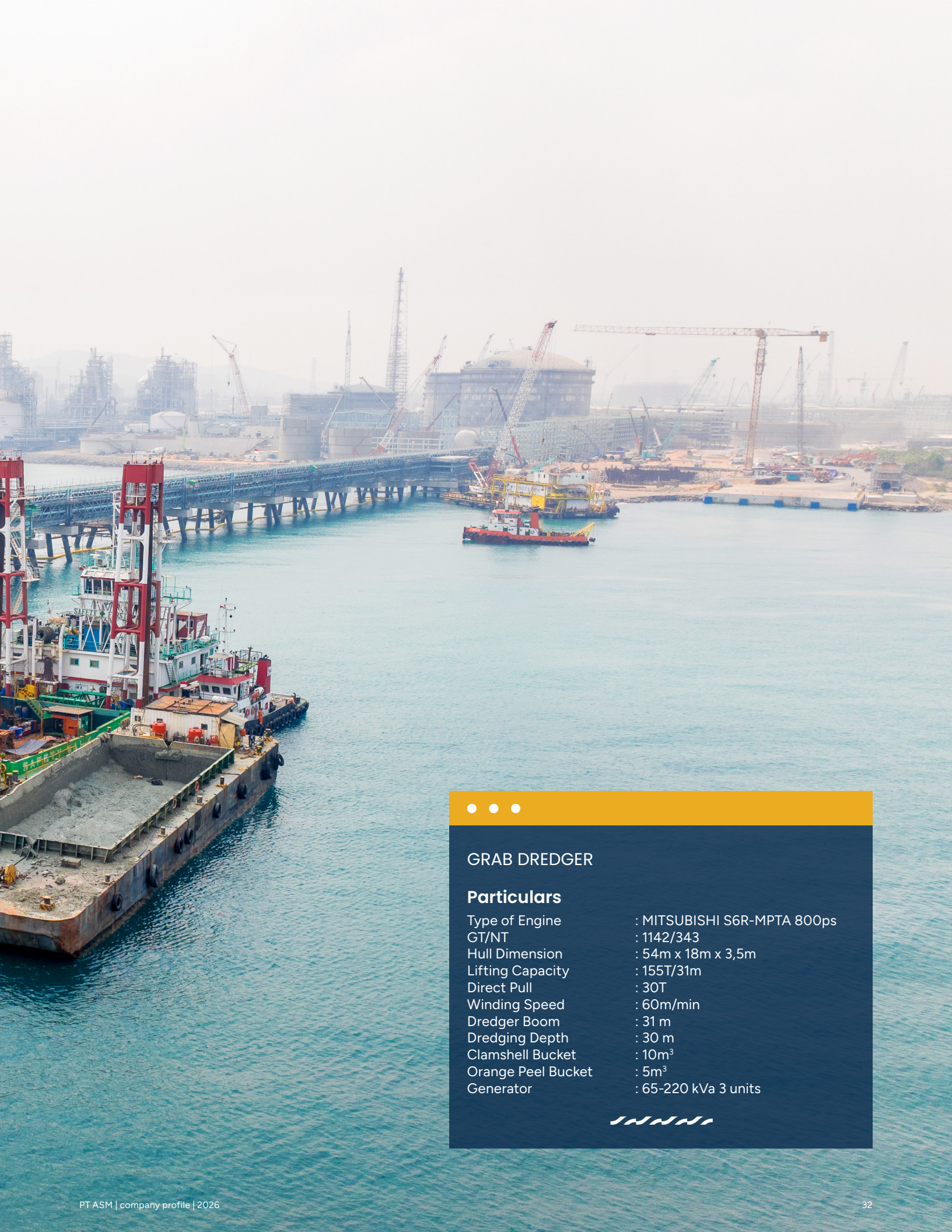
# Powered by Reliability, Driven by Vision.

We equip a reliable vessel that fully supports our vision of delivering excellence and efficiency in every operation. Designed with durability and performance in mind, the vessel is outfitted with advanced technology and safety features to ensure seamless operations in all conditions. Its reliability allows us to meet our commitments consistently, uphold the highest standards, and move confidently toward achieving our long-term goals.





# Bianca 155 Ton / 8m<sup>3</sup> Grab Dredger



## GRAB DREDGER

### Particulars

Type of Engine	: MITSUBISHI S6R-MPTA 800ps
GT/NT	: 1142/343
Hull Dimension	: 54m x 18m x 3,5m
Lifting Capacity	: 155T/31m
Direct Pull	: 30T
Winding Speed	: 60m/min
Dredger Boom	: 31 m
Dredging Depth	: 30 m
Clamshell Bucket	: 10m <sup>3</sup>
Orange Peel Bucket	: 5m <sup>3</sup>
Generator	: 65-220 kVa 3 units





# Cakra 120 Ton / 8m<sup>3</sup> Grab Dredger



## GRAB DREDGER

### Particulars

Engine	: MITSUBISHI S6R2-PTA 81282
Grab Capacity	: 8m <sup>3</sup> / 120 ton
Generating Set	: Hino 150 KVA Mitsubishi 175 KVA Mitsubishi 50 KVA Mitsubishi 40 KVA
Chisel Breaker	: 7 ton
Length Over All	: 40,30 m
Breadth Molded	: 17 m
Depth Molded	: 3 m
GRT	: 608





# 100 Ton Crane Barge



## Crane Barge

### Particulars

Engine	: YANMAR 6LAAL-DT 470HP
Model	: SKK-900DT-A
Hull Dimension	: 47m x 17m x 3m
Lifting Capacity	: 100T/22m & 70T/30m
Direct Pull	: 20T
Winding Speed	: 60m/min
Dredger Boom	: approx. 30 m
Dredging Depth	: approx. 30 m
Clamshell Bucket	: 4 m <sup>3</sup>
Generator	: 70-250kVa 3 units
Orange Peel Bucket	: 2.5 m <sup>3</sup>
Chisel Breaker	: 7 ton



# MEGI MARU



## ANCHOR BOAT

### Particulars

Type of Engine	: Mitsubishi S6BF-MTK
Number of Engine	: 2
Power	: 559kw
Built Year	: 1990
Length	: 13.45 m
Depth (Meter)	: 1.90 m
Gross Tonnage	: 27
Call Sign	: YDB 4158



# YASHIMA MARU

GT.39 No.3411/Ba-  
2012 Ba No.3111/L

YASHIMA  
MARU

## TUG BOAT

### Particulars

Type of Engine	: Mitsubishi S6R2-MTK
Number of Engine	: 2
Power	: 1,059kw
Built Year	: 1992
Legth	: 15.59 m
Depth (Meter)	: 2 m
Gross Tonnage	: 39T
Call Sign	: YDB 4157





# KEEP IT SAFE & SOUND

Implementing work safety in every activity is part of our culture, which is the core of the KISS Keep It Safe & Sound program. All of our employees are committed to establishing and ensuring a safe work environment.

Our organization is centered on caring for people. Employees and contractors alike are required to take ownership of their duty to work safely while doing their duties at ASM.

Our ultimate objective of eliminating all human injuries and protecting the environment can only be accomplished by working together.



**4.256.781** Man Safe-Hour

Without Lost Time Injuries

One million safe man-hours Patimban Port Developing Project. This achievement stands as a testament to the unwavering commitment, discipline, and teamwork shown by everyone on this project.

Reaching one million manhours safely is not just a number - it reflects our shared dedication to excellence, our strong safety culture, and our relentless focus on doing things the right way, every day.

One million safe working hours is not the ultimate goal, but rather a catalyst for a deeper commitment to implementing occupational health and safety - not as an obligation, but as a fundamental need.

## Public Speaking Training



“

**From enhancing collaboration and building relationships to increasing productivity and driving customer satisfaction, strong communication skills are fundamental for individual and organizational success.**

”

The significance of communication skills in the workplace cannot be overstated. From enhancing collaboration and building relationships to increasing productivity and driving customer satisfaction, strong communication skills are fundamental for individual and organizational success.

Employers should prioritize fostering a communication-friendly environment and invest in training programs to develop and sharpen these invaluable skills among their employees. By doing so, they can unlock the full potential of their workforce and achieve remarkable results in today's highly competitive business landscape.

In February 24 – 26, 2023 PT Anugerah Samudera Madanindo has partnered with TALKINC, a renowned expert in communication training, to offer an exclusive workshop designed to enhance our team's communication skills.



## ASM in IPA Convex 2023

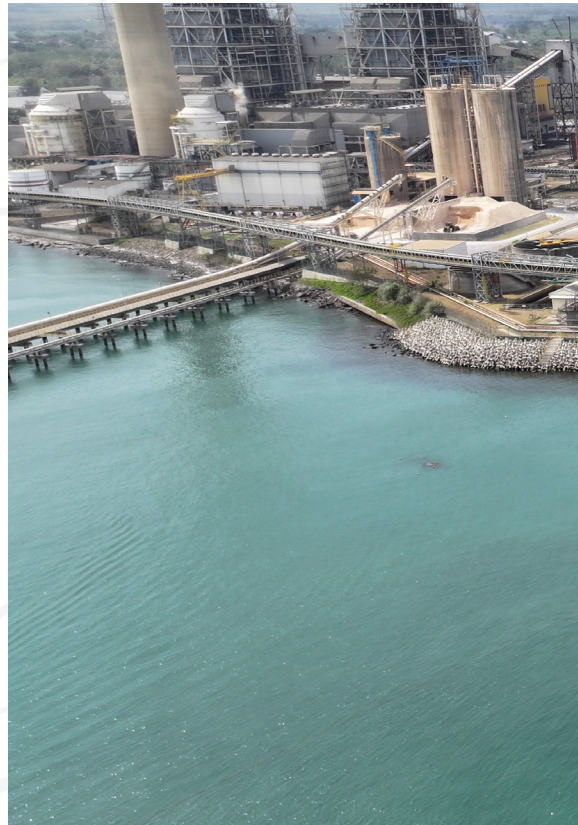
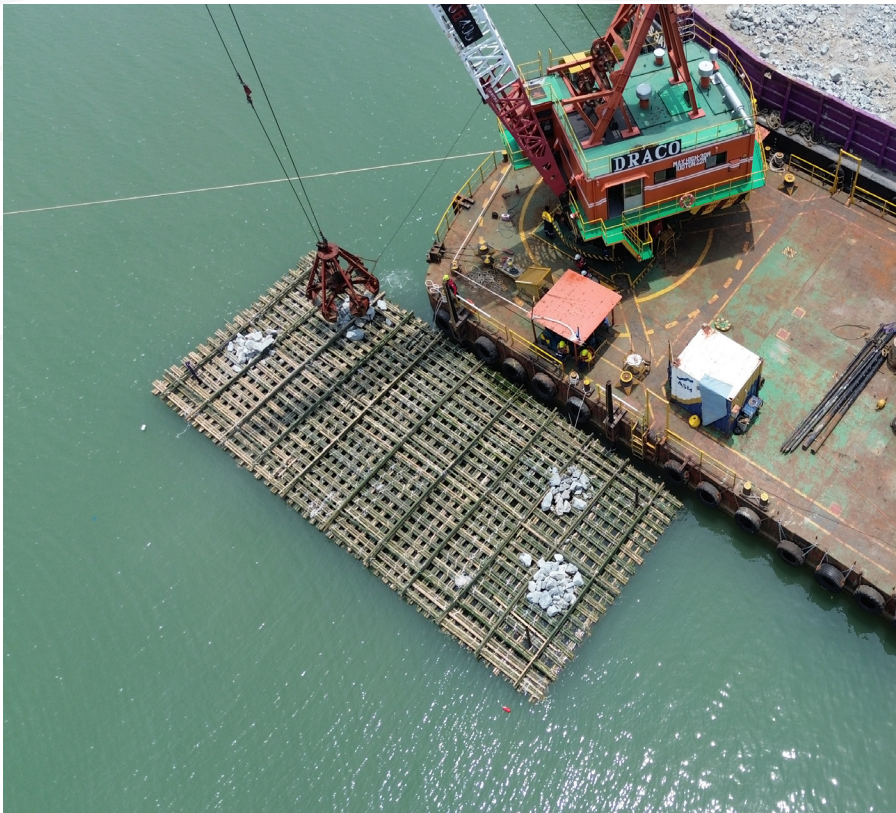
On July 24-26th, 2023, PT ASM was participating in the 47th IPA Convention and Exhibition (47th IPA Convex) at ICE BSD City. The IPA Convex stands as Indonesia's largest oil & gas convention, focusing on the critical topic of upstream investment in light of the ongoing energy transition period.

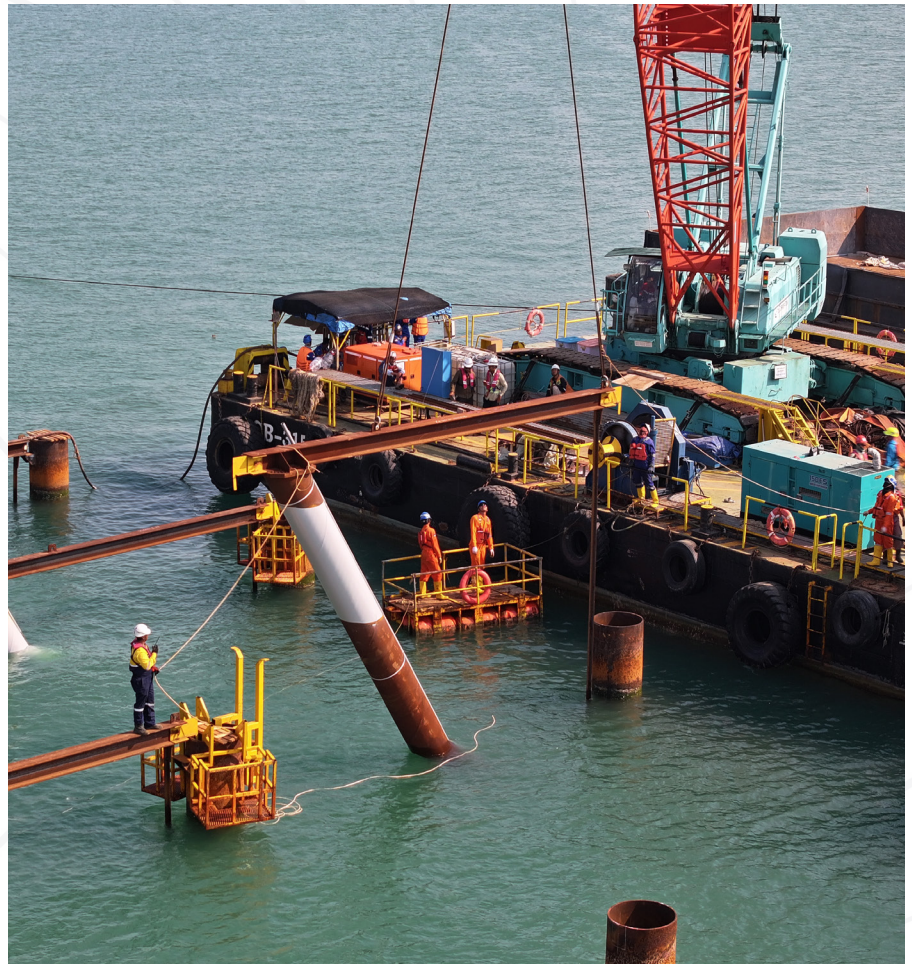


This event served as a gathering point for key stakeholders, including policymakers, global energy leaders, and industry professionals, engaging in enlightening panel discussions and technical presentations. It's a perfect opportunity to showcase your company's latest products and services for almost 20,000 offline attendees in three days. This momentous gathering presented an ideal opportunity for PT. ASM to demonstrate its expertise as a marine construction specialist, providing unwavering support to the oil & gas industries in developing their infrastructure and port facilities.



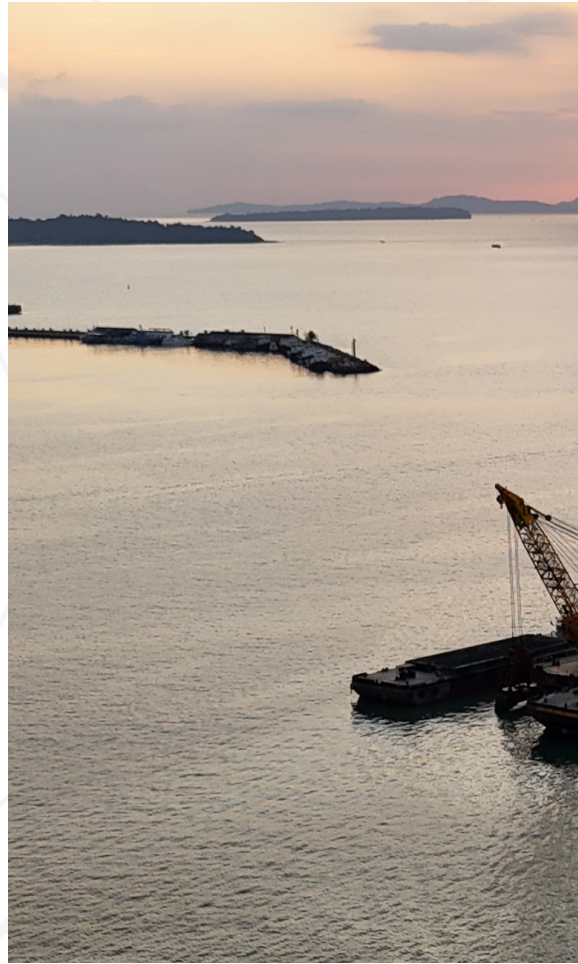
# OUR GALLERY

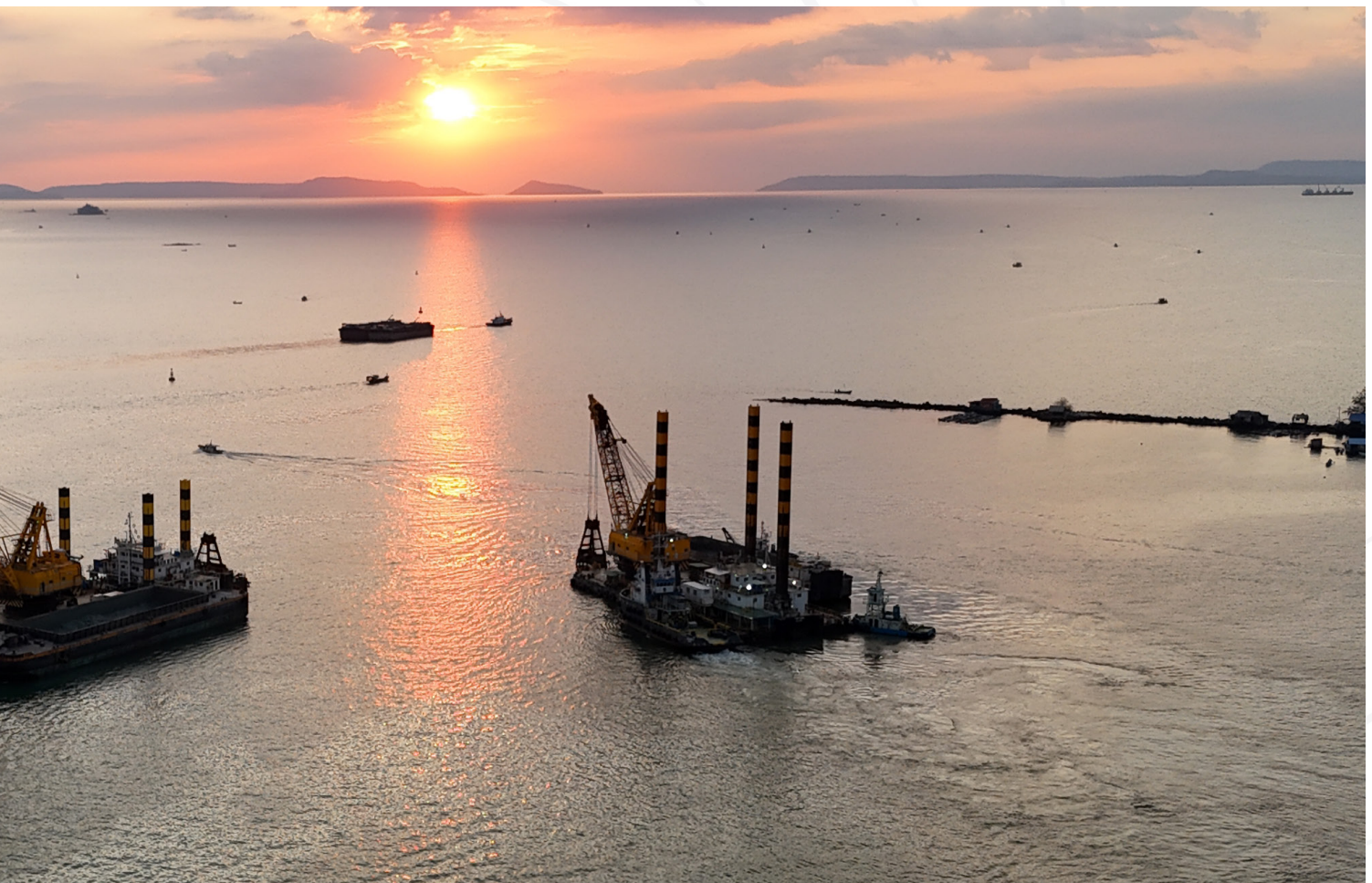














• • •

## We Accept Your Challenges

Since we are founded, ASM has been helping a lot of clients to overcome their challenges

How can we help you?  
Give us a call and tell us about your challenges.

**P.** 024-76581744  
**M.** [marketing@pt-asm.co.id](mailto:marketing@pt-asm.co.id)  
**W.** [www.pt-asm.co.id](http://www.pt-asm.co.id)  
**IG.** @ptasm.official







**PT ANUGERAH SAMUDERA MADANINDO**

**O.** Ruko Festive Citragrand A no. 23 Sambiroto,  
Tembalang, Semarang, Central Java

**P.** 024-76581744

**M.** [marketing@pt-asm.co.id](mailto:marketing@pt-asm.co.id)

**W.** [www.pt-asm.co.id](http://www.pt-asm.co.id)

**IG.** @ptasm.official